



WHY CHOOSE GAELTACHT IORRAIS, CO. MAYO

HERE'S WHY THE REGION IS A GREAT PLACE FOR LIVING,
WORKING, INVESTING, SHOPPING & VISITING.

Issued by

connectedhubs

INTRODUCTION

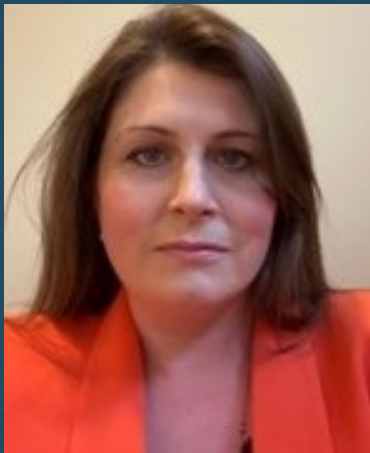
The Connected Hubs Showcase Day will see hubs from all over the country take on the role as key activators of community activity, promoting their locality as a great place to live, work and invest in.

The showcase will encourage more employers, small businesses and start-ups to consider the wide range of remote working options available nationally. It will also enable individual hubs to strengthen their stakeholder relationships and collaborate with other hubs in their region to attract investment, remote workers, home buyers, shoppers and visitors to their locality.



Stephen Carolan
Connected Hubs

WELCOME



Orla de Búrca
Erris SHOWCASE
Day coordinator

Having grown up and lived in Iorrais most of my life along with the opportunity to also work here, I am delighted to share all the benefits of what a great region the Iorras Gaeltacht, in North West Mayo hold. Gaeltacht Iorrais offer an excellent quality of life, outdoor lifestyles, strong connected communities, together with educated and highly skilled, talented people, which combine to make it an ideal place to live, work and start a new business.

I would like to thank the five hubs that worked closely with me on this Showcase Day initiative, you will see in the following pages what our localities have to offer people considering making the move to Gaeltacht Iorrais.

ABOUT GAELTACHT IORRAIS, CO. MAYO

Gaeltacht Iorrais in northwest Mayo has extensive sea coasts along its west and north boundaries. In terms of investment, Iorrais is a promising area with a lot of potential for growth. The region has a thriving tourism industry, with many visitors coming to enjoy the stunning scenery and outdoor activities. In addition to tourism, there are also opportunities in areas such as agriculture, fishing, and renewable energy.

For innovation driven enterprises, remote work and jobs, Iorrais is a great option for those looking for a slower pace of life and a more relaxed lifestyle. There are many small businesses and entrepreneurial ventures in the area, as well as opportunities to work in the tourism industry. The region also has a growing technology sector, with many companies offering remote work options.



There is lots here to make it a great location to live and work. Eachléim has a new top quality visitor centre opening shortly, called SOLAS. It contains a range of craft rooms, visitor centre and demonstration rooms. The latest addition to the gteic network of Connected Hubs members will be Gaoth Sáile which will open in early 2023. Gaoth Sáile is also celebrating the opening of a new hotel by local owners, the Erris Coast Hotel.

SHOWCASE LOCALITIES 2023



WHY CHOOSE BÉAL AN MHUIRTHEAD

HERE'S WHY OUR LOCALITY IS A GREAT PLACE FOR INVESTMENT,
REMOTE WORKERS, HOME BUYERS, SHOPPERS & VISITORS.

Issued by



WHY CHOOSE BÉAL DEIRG

HERE'S WHY OUR LOCALITY IS A GREAT PLACE FOR INVESTMENT,
REMOTE WORKERS, HOME BUYERS, & VISITORS.

Created by



WHY CHOOSE GAOTH SÁILE

HERE'S WHY OUR LOCALITY IS A GREAT PLACE FOR INVESTMENT,
REMOTE WORKERS, HOME BUYERS & VISITORS.

Created by



WHY CHOOSE BÉAL AN MHUIRTHEAD
ISSUED BY GTEIC @BÉAL AN MHUIRTHEAD

WHY CHOOSE BELDERRIG
ISSUED BY COMHLACHT FORBARTHA
BÉAL DEARG TEO

WHY CHOOSE GWEESALIA
ISSUED BY GTEIC@GAOTH SÁILE



WHY CHOOSE EACHLÉIM

HERE'S WHY OUR LOCALITY IS A GREAT PLACE FOR INVESTMENT,
REMOTE WORKERS, HOME BUYERS & VISITORS.

Created by



WHY CHOOSE EACHLEIM
ISSUED BY GTEIC@ANEACHLEIM



WHY CHOOSE GREANNAÍ

HERE'S WHY OUR LOCALITY IS A GREAT PLACE FOR INVESTMENT,
REMOTE WORKERS, HOME BUYERS, SHOPPERS & VISITORS.

Issued by



WHY CHOOSE GREANNAÍ
ISSUED BY GTEIC@AN CORRÁN BUI



WHY CHOOSE BÉAL AN MHUIRTHEAD

HERE'S WHY OUR LOCALITY IS A GREAT PLACE FOR INVESTMENT,
REMOTE WORKERS, HOME BUYERS, SHOPPERS & VISITORS.

Issued by



A member of
connectedhubs

ABOUT BÉAL AN MHUIRTHHEAD

Béal an Mhurthead is a town located in the northwest corner of County Mayo, Ireland. It is situated on the Mullet Peninsula, which is bordered by the Atlantic Ocean to the north and west and by the Broadhaven Bay to the east. Béal an Mhuirthead is a popular destination for tourists, with attractions such as beautiful beaches, scenic drives, and outdoor activities like fishing and hiking. It is also home to a number of historical and cultural sites, including the Ionad Deirbhile Visitor Centre, which tells the story of St. Deirbhile and her connection to the area.

In terms of infrastructure, Béal an Mhuirthead has a number of amenities and services available to residents and visitors, including supermarkets, pubs, restaurants, and hotels. The town also has a number of schools, healthcare facilities, and sports clubs, including a GAA club, a soccer club, and a golf club.



In recent years, there have been efforts to promote economic development in Béal an Mhuirthead and the wider Mullet Peninsula area.

For example, there is a Mullet Peninsula Strategic Plan in place that outlines a vision for sustainable development and growth in the area. This plan includes initiatives aimed at promoting tourism, supporting small businesses, and improving infrastructure such as roads and broadband connectivity. Additionally, there are a number of community-based organizations and initiatives in the area that work to support economic development and improve quality of life for residents.

ACCOMMODATION

Available accommodation*

92

available to buy

3

available to rent

*available properties in March 2023 | 20 km Radius

Local Auctioneers

1 Gerard Coyle Auctioneers

2. Tim Quinn & Co Auctioneers



Issued by

TRAFFIC AND TRANSPORTATION

The main means of transport in Beal An Mhuirthead are car and busses.

Bus Eireann offers a regular bus service to Béal An Mhuirthead from the surrounding towns and cities in Ireland

TFI Local Link Mayo are delighted to announce the revised 978 service connecting Béal An Mhuirthead to Castlebar, will now operate three times a day, seven days a week with a new regular Sunday and Bank Holiday service, new mid-day service from Castlebar to Béal An Mhuirthead and peak-time service for commuters to Castlebar offering improved connectivity to regional bus and rail services.

Béal an Mhuirthead is well serviced with local bus/coach and taxi hire.



THINGS TO DO

1. Golf at Carne Golf Links
2. Local Art Centre Activities
3. Step into the Erris Loop Walks, Siúlóidí Dún Chaocháin and many other local walks
4. Go Wild along The Wild Atlantic Way
5. Take a dip in the Tidal Pool



5. Enjoy Water Sports Activities
6. Get fit in our Outdoor or Indoor Fitness Centres
7. Visit the Oileáin Inis Gé
8. Be part of the Béal An Mhuirthead Festival, Far West Festival, Erris Agricultural Show and other festivals
9. Learn the Irish Language
10. Swim in the Blue Flag Beaches
11. Try Yoga

Issued by

HERITAGE SITES

- Ceide Fields
- SOLAS Tourism Hub
- Deirbhile's Well & Church
- Blacksod Lighthouse
- Sunclock
- Glosk Tower, Fál Mór



- Cross Abbey
- Early Christian Cross Slab
- Danny's Stone
- Teachín an Watch



Issued by

SHOPPING



Some of the notable shopping areas in Béal an Mhuirthead include:

1. Drapery shop which sells a wide range of men, ladies and children's clothing. They also stock GAA Clothing , school uniforms and provided men's suit hire for all events.
2. Various grocery shops stocking fresh produce and household items.
3. Sláinte Healthfood caters for all your health food products.
4. Local Bakery provides freshly baked bread and pastries.
5. There are a number of Pharmacies located in the town
6. Computer and phone shops as well as a local broadband supplier
7. Garden Centre and flower shops.
8. Family run book store
9. A number of home furnishings and hardware stores.
10. Lots of pubs and restaurants and 3 hotels in the town.

Issued by

SCHOOLS & EDUCATION SYSTEM

Within commuting distance of Belmullet there are:

1

third level education institute

2

secondary schools

5

primary schools within 10 km



Issued by

HEALTHCARE SERVICES

Hospital

- Beal An Mhuirthead Community Hospital and outpatient clinic

Nursing Homes

- Beal AN Mhuirthead Community Nursing Home
- Sonas Nusing Home Beal An Mhuirthead

Doctors

- Swanick Family Practice
- Dr Fergal Ruane
- Glenamoy Health Centre

Healthy Community Initiatives
Chiropody and Podiatry Services
Opticians
Physio services



Issued by

COMMUNITY GROUPS AND VOLUNTEERING

- Béal An Mhuirthead Tidy Towns
- Béal An Mhuirthead Chamber of Commerce
- Béal An Mhuirthead / Erris Lions Club
- Ionad Ealaíona Iorrais (Arts Center)
- Cara Iorrais
- Irish Wheelchair Association / Accessible homes Béal An Mhuirthead
- Foróige Béal an Mhuirthead
- Gaeltacht Iorrais (hurling & camogie)
- Gaeilge Iorrais (Irish Language Supports)
- Béal An Mhuirthead Cycling Club
- Cáirde Áras Deirbhile
- Erris Park Run
- Erris Athletic Club
- 3 GAA Clubs
- 2 Soccer Clubs
- RNLI & Ballyglass Coast Guard
- IWA



Issued by

COWORKING CAPACITY

gteic@ Béal an Mhuirthead



Issued by



NETWORKS IN BÉAL AN MHUIRTHHEAD



Erris Chamber of Commerce

Iorras Domhnann Rural Tourism Co-Operative
Society Limited



Gaeilge Iorrais



Mayo North East LEADER Partnership CLG

Baile Slachtmhar
Bhéal an Mhuirthhead
Belmullet Tidy Towns



Coiste Baile Slachtmhar Bhéal an
Mhuirthhead (Tidy Towns)



Grow Remote Community

Issued by



PLANS FOR 2023



1. Slí Iorras: The development of a new Coastal Walk linking Béal an Mhuirthead to An Fhód Dubh is underway. The 44 km trail will provide a safe and accessible route for walkers to enjoy the stunning coastal scenery of the area.



2. Town Centre Regeneration: The town centre is undergoing a regeneration project, with improvements being made to public spaces, pedestrian areas, and the overall streetscape. This is aimed at making the town more attractive and welcoming to visitors and locals alike.



3. Wild Atlantic Way: The Wild Atlantic Way tourism initiative continues to promote the area as a top destination for visitors to Ireland. This includes the development of new visitor attractions, improvements to existing sites, and marketing campaigns to attract tourists.

Issued by

PLANS FOR 2023



4. Renewable Energy: The proposed Atlantic Marine Energy Test Site (AMETS) will be located offshore close to Béal an Mhuirthead which is being developed by SEAI to facilitate testing of full-scale wave energy converters in an open ocean environment. There are several proposals for the development of renewable energy projects in the Iorras (Erris) region, including wind and solar farms, some of which have been developed close to Bellacorrick in Iorras. These projects could provide significant economic benefits to the local community, while also helping to reduce carbon emissions and promote sustainable development.

5. Business Support: Údarás na Gaeltachta is working to provide support to businesses in this Gaeltacht area, including access to funding, training and mentoring programmes, and other resources to help them succeed and grow. Mayo North East Leader Development Company and the FLAG Programme (BIM) and Mayo also offer supports to the business and local community.





WHY CHOOSE BÉAL DEIRG

HERE'S WHY OUR LOCALITY IS A GREAT PLACE FOR INVESTMENT,
REMOTE WORKERS, HOME BUYERS, & VISITORS.

Created by



A member of
connectedhubs

ABOUT BÉAL DEIRG

Béal Deirg is a small village located on the north coast of County Mayo in Ireland. It is situated on the edge of Béal Deirg Bay, overlooking the Atlantic Ocean. The village is known for its stunning natural beauty, with rugged coastal cliffs and sweeping ocean views.

Béal Deirg has a rich history, with evidence of human habitation dating back thousands of years. Archaeological sites in the area include a prehistoric farm and a number of wedge tombs.



In addition to its natural beauty and historical significance, Béal Deirg is also a popular destination for outdoor activities such as hiking, fishing, and surfing. The nearby Béal Deirg valley offers numerous hiking trails and scenic walks, while the bay is known for its abundant fish stocks and popular among anglers.

Béal Deirg is a charming and picturesque village that offers visitors a glimpse into Ireland's rich history and natural beauty.

ACCOMMODATION

Available accommodation*

52

available to buy

*available properties in March 2023 | 20 km Radius



Created by

TRAFFIC AND TRANSPORTATION

The main means of transport in Béal Deirg are private cars.

If you are driving, Béal Deirg is accessible via the R314 road, which runs along the north coast of County Mayo.

There is a limited bus service that runs from Gleann na Muaidhe, which is about 11km from Béal Deirg, to the nearby town of Ballina. From Ballina, there are connections to other parts of the county and beyond.

Alternatively, if you are feeling active, Béal Deirg is a great place to explore on foot or by bike. The surrounding countryside offers many scenic walks and cycle routes.

THINGS TO DO

1. Visit the world famous Céide Fields
2. Discover the Béal Deirg Valley Experience
3. Go fishing at the nearby Béal Deirg Harbour
4. Swim in the natural sea pool



5. Explore the rugged coastline
6. Take to the hills and enjoy some hiking
7. Enjoy the scenery and embrace a slower lifestyle

Created by

SHOPPING



The nearby town of Ballycastle, which is about an 8km drive from Béal Deirg, has a few small shops and convenience stores and post office where you can purchase groceries and other essentials.

For a wider range of shopping options, the towns of Ballina (45 minutes drive) and Béal an Mhuirthead (30 minutes drive), have a variety of shops, including supermarkets, clothing stores, and gift shops.

Alternatively, if you are looking for local products and crafts, there are several farmers' markets and craft fairs held in the area throughout the year, where you can purchase handmade goods, fresh produce, and other locally produced items.

SCHOOLS & EDUCATION SYSTEM

Within commuting distance of Belderrig there are:

5

Secondary schools

1

Primary school

1

Naíonra Preschool



COMMUNITY GROUPS AND VOLUNTEERING

- Mayo Volunteer Centre
- Comhlacht Pobal Beal Dearg Teo
- Belderrig Bronze Man



Created by

COWORKING CAPACITY

Comhlacht Forbartha Bhéal Deirg Teo -
Community centre within the village of
Béal Deirg which offers the hire of a desk
space with fibre speed broadband



NETWORKS NEAR BÉAL DEIRG



Mayo North Tourism



Ballina Chamber of Commerce



Mayo Local Enterprise Office



Údarás na Gaeltachta



WHY CHOOSE GAOTH SÁILE

HERE'S WHY OUR LOCALITY IS A GREAT PLACE FOR INVESTMENT,
REMOTE WORKERS, HOME BUYERS & VISITORS.

Created by



A member of
connectedhubs

ABOUT GAOTH SÁILE

Gaoth Sáile is a small village located along the Wild Atlantic Way on the northwest coast of County Mayo in Ireland.

It is situated close to the towns of Béal an Mhuirthead and Bangor Erris, and is a popular destination for outdoor enthusiasts due to the surrounding picturesque countryside including many beautiful sandy beaches and its proximity to the Atlantic Ocean. It is known for its rugged beauty, with stunning views of the coastline and surrounding mountains. Visitors can explore the many local beaches in nearby Dumha Thuama, Ráith & Dumha Locha, go fishing surfing or kayaking, enjoy the Gaoth Sáile/Dumha Thuama loop walks or take a longer hike on the nearby Bangor Trail.



The village is primarily a rural community relying on farming and fishing for its livelihood. It is home to a number of small businesses, and it is also renowned for its thriving community spirit and local sports clubs.

Gaoth Sáile means 'Salty Sea Inlet'. It is said that the playwright John Millington Synge's writing was greatly influenced by his visits to Gaoth Sáile. "Anyone who has lived in real intimacy with the Irish peasantry will know that the wildest sayings and ideas in this play are tame indeed, compared with the fancies one may hear in any little hillside cabin in Gaoth Sáile..." J M Synge, (Jan 21st 1907) in his preface to 'The Playboy of the Western World'. Gaoth Sáile offers a peaceful and scenic retreat for those looking to escape the hustle and bustle of city life and immerse themselves in the natural beauty of the Irish countryside.

ACCOMMODATION

There are many options available for accommodation in Gaoth Sáile. In the heart of the village is the Erris Coast Hotel and there are also several self-catering holiday homes, apartments and rooms available nearby. Within a 10-15 minute drive of Gaoth Sáile there are also several guesthouses, B&Bs, and hotels. Some popular options include Béal an Mhuirthead where you'll find hotels such as the Broadhaven Bay, the Talbot, and the Western Strands, and many other B&B and self catering options.



Created by

TRAFFIC AND TRANSPORTATION

Gaoth Sáile is a small village in County Mayo, Ireland, and although there is some public transportation available it is advisable to travel by car or bike when visiting. There are bi-weekly public and private buses connecting Gaoth Sáile with the local town Béal and Mhuirthead, and the larger towns Ballina & Castlebar where there are train stations. There is a daily bus service from nearby Bangor Erris and Béal and Mhuirthead to Ballina or Castlebar, and there are also local taxis available for hire.



THINGS TO DO

1. Water sports & Beach walks: Dumha Thuama, Ráith, Dumha Locha, Sraith.
2. Walking and hiking: Gaoth Sáile/Dú Thuama Loops, the Ceann Iorrais Loop, the Bangor Trail.
3. Fishing off the rocks or at Owenmore River and Carrowmore Lake
4. Golf at Dumha Thuama Par 3 Links course overlooking Achill island.
5. Local pubs in Gaoth Sáile and Dumha Thuama and meet the friendly locals



6. Dining in Erris Coast Hotel
7. Annual Gaoth Sáile Festival and horse racing on the beach in August
8. Far West Fest Music Festival in August.
9. Community group activities and clubs: boxing, rowing, swimming, gym, cycling, gardening, drams, active retirement activities, Irish language, yoga & pilates etc

Created by

SHOPPING



Gaoth Sáile is a rural village and does not have any major shopping areas. However, there are some local shops where visitors can purchase basic groceries, necessities and local produce. For a wider range of shopping options Béal and Mhuirthead, 12 km away, has some larger supermarkets and businesses, and the larger towns of Ballina and Castlebar are both located between a 45 to 55-minute drive from Gaoth Sáile, and both offer shopping centres, supermarkets, and a variety of retail stores.

SCHOOLS & EDUCATION SYSTEM

- 2 Primary School in Gaoth Sáile and Dumha Thuama
- 2 Secondary Schools in Béal an Mhuirthead



School transport is available to Secondary Schools

Created by

COMMUNITY

- Gaoth Sáile Community Centre offering various spaces, events, activities and services to the local community, including community gym, office space, recreational & sport space.
- 2. Gaoth Sáile Tidy Towns dedicated to keeping the village beautiful.
- 3. Gaoth Sáile Community Council promoting local community development
- 4. Comharchumann Cill tSeadhna providing meals-on-wheels, care for the elderly programme, community cafe, community laundry, and other community events and services.



COWORKING CAPACITY

Gaoth Sáile is a small but thriving rural area in County Mayo. Many community groups in Gaoth Sáile are dedicated to continuously improving the amenities and services in the village and surrounding areas. The Community Centre in Gaoth Sáile offers opportunities for remote work or coworking and shared office spaces at gteic@GaothSáile depending on the specific needs and arrangements of individuals or groups.



NETWORKS IN GAOTH SÁILE

Gaoth Sáile Community Council & Development

Údarás na Gaeltachta

Gaoth Sáile Tidy Towns

Comharchumann Cill tSéadhna

Scéim Sóisialta Cill tSéadhna

Kiltane Community Futures

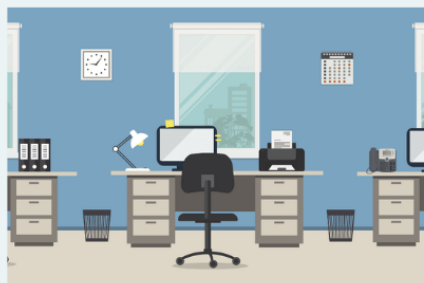
Mayo County Council

Mayo North East Development Co.



Created by

PLANS FOR 2023



Gaoth Sáile Community Centre offering Co working office and meeting room spaces in gteic@Gaoth_sáile



Community Gym, Swim & Rehabilitation in Gaoth Sáile Community Centre

Virtual reality golf simulator in Gaoth Sáile Community Centre.



Expansion of community services in Gaoth Sáile Community Centre

Created by



WHY CHOOSE EACHLÉIM

HERE'S WHY OUR LOCALITY IS A GREAT PLACE FOR INVESTMENT,
REMOTE WORKERS, HOME BUYERS & VISITORS.

Created by



A member of
connectedhubs

ABOUT EACHLÉIM

Eachléim (in English known as Aughleam) is a small rural village located in County Mayo, in the west of Ireland. It is situated south of the Mullet Peninsula, overlooking Blacksod Bay.

The village is known for its rugged coastal scenery, its traditional Irish music scene, and its strong sense of community. The surrounding area is home to many small farms and fishing communities, which contribute to the local economy. Despite its small size, Eachléim has a number of amenities for residents and visitors. These include a post office, a pub, and a community center that hosts cultural events and activities and 2023 will see the opening of a new tourism hub "SOLAS" which will also have a cafe.



One of the main attractions in the area is Eachléim's rugged coastline, which is popular with hikers, birdwatchers, and nature enthusiasts. The area is also known for its rich cultural heritage, with many ancient sites and monuments located nearby, including the Gloshe Napoleonic Tower and the early Christian monastic settlement on nearby Inishkea Island. Overall, Eachléim is a charming village that offers a glimpse into traditional rural life in Ireland, and is a popular destination for those looking to explore the rugged beauty of the Mullet Peninsula.

ACCOMMODATION

Available accommodation*

2

B & B's

40

available to buy (Béal an Mhuiread & surrounding area)

Holiday homes (short term rental) is also available in the area

*available properties in April 2023 | 20 km Radius



Created by

TRAFFIC AND TRANSPORTATION

The main means of transportation in Aughlea are car and buses.

A daily service runs from An Fhód Dubh (Blacksod in English) to Ballina at 07.15a.m., 15.25p.m. & 20.15p.m. and an additional service runs from An Fhód Dubh to Béal an Mhuirthead at 08.05a.m.

There are regular bus services that connect Béal an Mhuirthead to other towns and cities in the region, including Dublin and Galway. Visitors can also take a taxi from Béal an Mhuirthead to Eachléim.

For those traveling by car, Eachléim can be reached via the R313 regional road, which runs along the coast of the Mullet Peninsula. There is free parking available at the community hall in the village. Once in Eachléim, visitors can explore the area on foot or by bicycle.

Source - ChatGPT

THINGS TO DO

1. Take a walk along the stunning beaches: Cuan Oiligh, An Mullach Rua, An Tearman, An Fál Mór, Gloish.
2. Explore hiking with several walking trails.
3. Bike hire and explore the area.
4. Sea Angling and boats trips to the offshore Islands
5. Various Surf and Yoga schools/camps for all ages.



5. SOLAS - visitor attraction
6. Fód Dubh (Blacksod) Lighthouse Tours
7. UISCE- Irish language School/watersports
8. Play golf at Cairn Golf Links
9. Discover historic sites.



Created by

SHOPPING



While there are no shops currently in the area the nearest grocery store is located in the village of Binghamstown 12km away.

For larger shopping needs, visitors can travel to nearby towns like Béal an Mhuirthead or Ballina, which have a wider range of shops and businesses. Béal an Mhuirthead, in particular, is known for its Summer farmers market, which takes place every Saturday and offers a wide variety of local produce and handmade crafts.



Created by

SCHOOLS & EDUCATION SYSTEM

Primary school & Naíonra

- There is a Naíonra (pre-school) 'Naíonra na hEachléime' in the grounds of the school which operates through the medium of Irish.
- There is 1 primary school located in the immediate area of Eachléim village. The school is called Scoil Naomh Bhreandáin and also provides education for children from junior infants to sixth class through the medium of Irish.
- Children in the area attend the 2 secondary schools in nearby Béal an Mhuirthead. School transport is serviced by Bus Éireann locally.



Created by

COMMUNITY GROUPS AND VOLUNTEERING

- Comharchumann
Forbartha Ionad Deirbhile -
Community Development
Co-operative
- Gaeilge Iorrais - Language
Plan Committee
- Cumann na mbadóirí
- Club Óige



COWORKING CAPACITY

Gteic@AnEachleim



Created by



Source ChatGPT

NETWORKS



Created by



Source ChatGPT

PLANS FOR 2023



The government and local authorities in Ireland have developed a number of initiatives and plans aimed at promoting economic development and improving infrastructure in rural areas like Eachléim.

One such initiative is the Rural Regeneration and Development Fund, which was launched in 2018 to support economic development and improve quality of life in rural communities. This fund provides financial support for a range of projects, including infrastructure upgrades, community facilities, and tourism development. Together with the support of Údarás na Gaeltachta and Roinn Cultúir, Oidhreachta agus Gaeltachta, Eachléim will welcome the opening of a new tourism hub, SOLAS in the area.

Another initiative is the National Broadband Plan, which aims to provide high-speed broadband to all homes and businesses in Ireland, including those in rural areas like Eachléim. The plan is being implemented over a number of years, with a goal of providing universal broadband coverage by 2026.

Comharchumann Forbartha Ionad Deirbhile work to support economic development and improve quality of life for residents, promoting growth and development in the area while preserving and promoting the Irish language locally.

Created by



WHY CHOOSE GREANNAI

HERE'S WHY OUR LOCALITY IS A GREAT PLACE FOR INVESTMENT,
REMOTE WORKERS, HOME BUYERS, SHOPPERS & VISITORS.

Issued by



A member of
connectedhubs

ABOUT GREANNAI

The name "Teach Greannai" translates to "house of the graces," which suggests a history of religious significance in the area. The village of Currán Buí, a mile from Teach Greannaí, is home to the ruins of an old church, which is believed to date back to the medieval period. Teach Greannai is a small townland located in County Mayo, Ireland. It is situated 20 miles from the town of Béal an Mhuirthead. The townland is known for its beautiful scenery, with rolling hills and tranquil green countryside. Situated near the coastline of the Wild Atlantic, it hosts a variety of attractions, the beautiful Rinroe beach, Port a Chlóidh beach & Currán Buí beach. There is several areas along the coast for rock & beach fishing, also the local community have 4 different harbours, which are used predominantly by the local fishermen. The well known loop walks of the Ceathrú Thaidhg, in the townland of Chill Gallagáin, North Mayo, consists of two different areas, the Ceathrú Thaidhg loop and the Benwee loop walk. There are breathtaking clifftop views over the stunning Broadhaven Bay, with a view of the Staggs of Broadhaven. The townland is also located near several popular tourist destinations, including along the Wild Atlantic Way and the neolithic landscape of the Céide Fields which is the oldest known field systems in the world, over five and a half millennia old.



Teach Greannai is set in a quiet residential area, which caters to the needs of its community. Visitors will receive a warm welcome in Teach Greannaí community centre, an Currán Buí, located in the parish of Cill Comáin at the heart of the North Mayo Gaeltacht. The Irish language is still spoken as a first language in many parts of the area, it is spoken in addition to English in the setting of Teach Greannai. , a restaurant/café/takeaway service, delivering meals on wheels, school lunches and has an inhouse laundrette ,also, visitors to the centre can avail of guided tours of the wider Cill Chomáin area.

The centre now offers the use of their new IT Hub (gteic@Greannaí) which offers an opportunity to hire a desk space to work remotely for anyone that is visiting or wishes to extend their stay longer in the local area. It also opens a new chapter for the people of Cill Chomáin, allowing the introduction of online courses and work from home without the need to travel outside their own area. We also offer a photocopying service. Visitors to the centre are always guaranteed a Céad Míle Fáilte by all.

ACCOMMODATION

Teach Greannaí offers unique accommodation onsite in the form of two Pods. One with an ensuite whilst the other has its own private toilet & shower area, just a few steps from Pod. There is a Bed & Breakfast based in the scenic area of Port a Chlóidh and there are several Airbnbs in the surrounding area.

Teach Greannaí offers packed lunches to tours or individuals visiting the area to take on their hike. Walkers can also avail of showering facilities for a nominal fee onsite at Teach Greannaí!

*Teach
Greannaí*



TRAFFIC AND TRANSPORTATION

Greannai is a small village located in County Mayo, Ireland. As it is a rural area, private transportation is the main means of getting around the surrounding areas. The most common way to travel in the area is by car or bike.



However, there are also local taxis available for hire. There are no trains or bus station in the area, the nearest train station is Ballina, which is 61.6km away, but there are local bus services connecting the nearby towns and villages to larger cities and towns in the region. The nearest airport is Ireland West Airport Knock, which is approximately 107.6km away.

THINGS TO DO

- Visit the Neolithic site of Céide Fields
- Go fishing! Rock fishing & sea angling are very popular along the coast of Chill Chomáin. With fishing ports in Port d'Urling, Port a Chlóidh & Rinroe. Ros Diumhach is also a popular fishing area.
- Visit the Inis Gé Islands off the Erris Peninsula
- Play golf at The Carne Golf Links
- Go hiking! Explore the beautiful cliffs & scenery on the renowned Ceathrú Thaidhg & Port a Chlóidh loop walks.



- Whilst doing the loop, you will come across the giant windchimes at Benwee head.
- Go cycling! There are lots of hidden gems around Teach Greannaí and the surrounding areas.
- Visit the Mullet Peninsula
- Explore the Wild Atlantic Way



SHOPPING

Teach Greannai is a small village in County Mayo, Ireland, and as such, it does not have a significant shopping district. However, there are several small shops, the nearest being Garvins local shop & the famous Teach Ó Conghóile (Connollys' Pub), Ceathrú na gCloch. Garvins provide most necessities such as groceries and other household items. Béal an Mhuirthead, the nearest town is approximately 25 kilometers away, offers a wider range of shopping options. Both Ballina & Castlebar are about an hours drive away & the shops cater for all needs.



SCHOOLS & EDUCATION SYSTEM

1

Naionra Ceathrú Thaidhg.

An all Irish Preschool in Ceathrú Thaidhg. Preschool children are supported in play through the medium of Irish.

2

National Schools:

There are 2 schools in the vicinity of Teach Greannaí.

- Ros Dumhach National School
- Scoil Naisiunta Ceathrú Thaidhg.

Both National schools are within an 8km radius of Greannaí village.

1

Secondary schools:

Gaelcholáiste Chomáin, Ros Dumhach. This secondary school teaches through the medium of Irish. It is 5.1km from the village of Greannaí .



Gaelcholáiste Chomáin



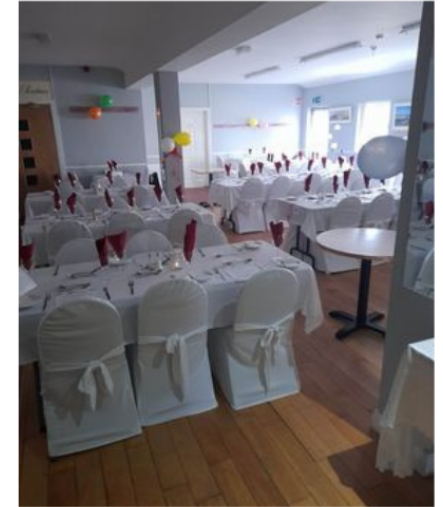
Ros Dumhach National School

Teach Greannaí Facility

Teach Greannaí is a community centre in a picturesque area of Currán Bui, in the parish of Chill Chomáin in the center of the North Mayo Gaeltacht.

We provide a unique service, catering for all our community. The following are a list of some of what is catered for here.

- gteic Digital Hub
- 2 Accommodation Pods on grounds
- Diner/Takeaway service
- Meeting hall
- Catering for all functions
- Laundry Service
- Faróige
- Teach Greannaí Meals on Wheels
- Woodturning courses
- Community education ran through MSLETB



COWORKING CAPACITY



Remote Working Facilities at our Gtiec Hub
High Speed Fibre Broadband
Break out Areas
Tea/Coffee/Kitchen Facilities
Meeting Training Hall Available with Presentation
Equipment
Competitive Rates

**CURRÁN BUI, BÉAL AN ÁTHA, CO MHAIGH EO.
F26W7W9**

Fón 097 88935 seirbhisicuram@gmail.com



NETWORKS NEAR GREANNAI



Údarás na
Gaeltachta

Údarás na Gaeltachta



Oirthuaisceart Mhaigh Eo
Mayo North East

Mayo North East LEADER



North Mayo TourismDER

Issued by

COMMUNITY GROUPS AND VOLUNTEERING

- CLG Chill Chomáin
- Kilcommon Community
- Womens Shed
- Mens Shed
- Foróige
- Music Circle
- Order of Malta
- Civil Defence
- Irish Wheelchair Association
- Cara Iorrais

